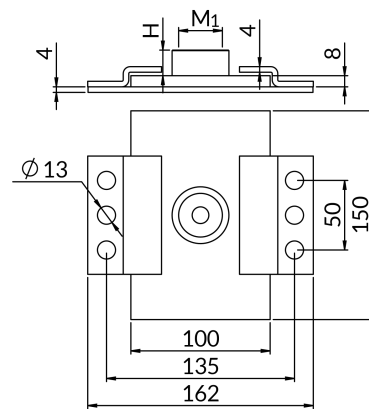
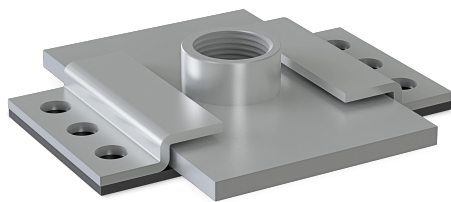


## FIXED POINTS AND SLIDING PLATES

### Sliding supports PSA1



- **Corrosion protection:** galvanic zinc coating
- **Application:** for the attachment of installations subject to thermal expansion. They handle the axial elongation of pipelines and level the stresses at the fastening points. Designed for mounting directly to the subsurface and for mounting profile construction. Designed to be installed as a pipeline support.

Connection Size M1	Connection h [mm]	Offset max [mm]	Quantity in package	Order designation	Catalog number
<a href="#">Approvals</a> EN-ITB-KOT-2020_1563 wydanie 2 > <a href="#">Declarations</a> EN-KDWU 06_2025					
1/2	15	65	1	PSA1G1/2 *	80410101200
3/4	17	65	1	PSA1G3/4 *	80410103400
1	18	65	1	PSA1G1 **	80410110000
1 1/4	23	65	1	PSA1G1 1/4 *	80410111400
M10/12	17,5	65	1	PSA1M10/12	80410110120
M12/16	26	65	1	PSA1M12/16	80410112160
M20	16	65	1	PSA1M20	80410100200