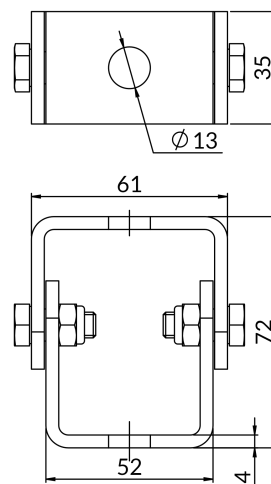
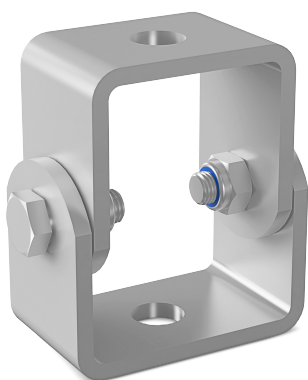


## FASTENING AND CONNECTING ELEMENTS

### Sloped angle rod connector WP



- **Corrosion protection:** galvanic zinc coating
- **Application:** Direct mounting to structural elements and mounting profiles, used for struts and tie rods; used on sloping building elements, tie rods can be installed at any angle (angle can be set from 0° to 90°); has two 13 mm diameter holes; easy installation and height adjustment of the threaded rod.

Permissible load [kN]	Unit weight [kg]	Quantity in package	Measurement unit	Order designation	Catalog number
Approvals EN-ITB-KOT-2020_1562 wydanie 2 > Declarations EN-KDWU 05_2025					
8	0.31	10	szt./pcs.	WP	81105000000